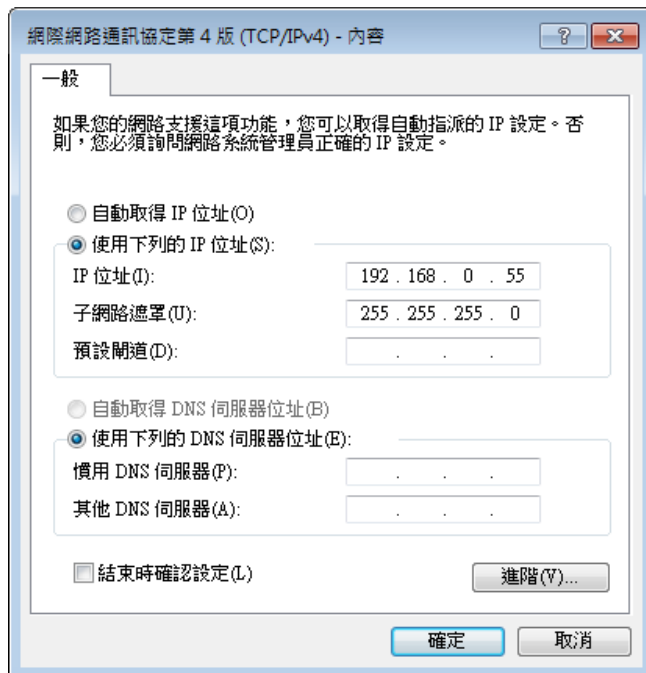


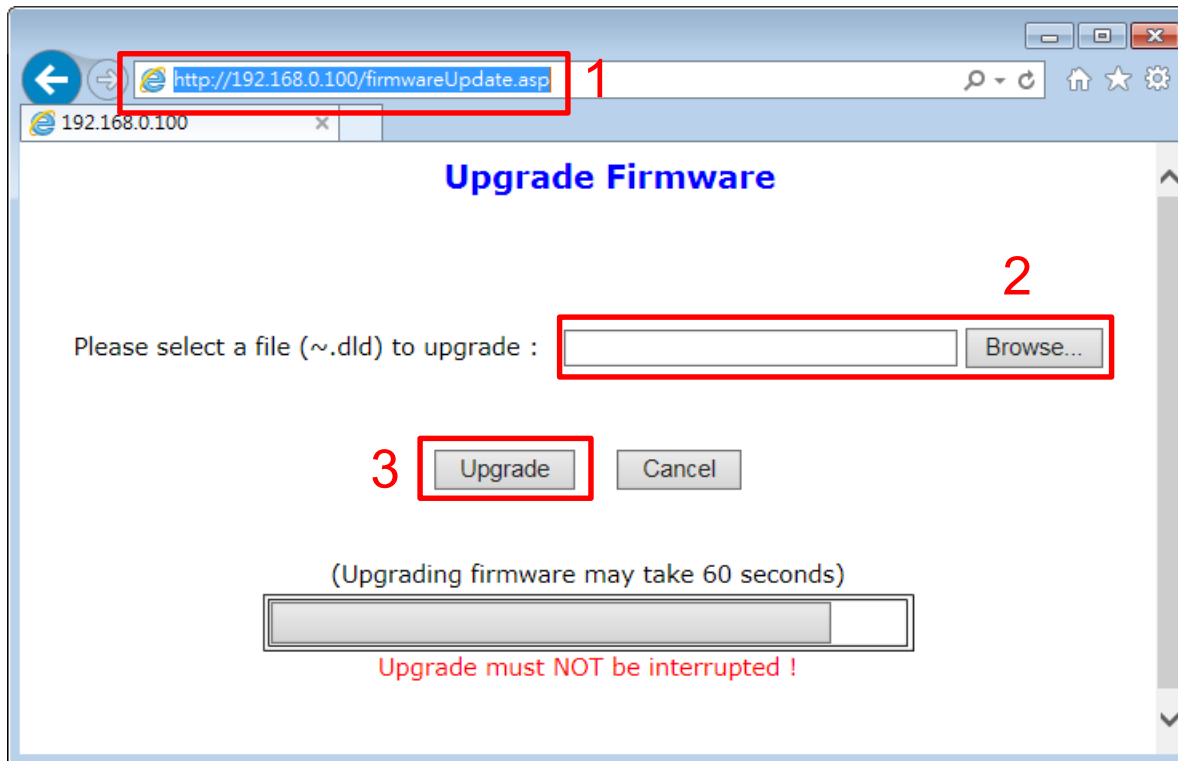
LAN FW (1/4)

1. Turn on the projector.
2. Wire the projector RJ45 to PC (Direct wiring w/o hub)
3. Configure the projector IP to 192.168.0.100 from OSD
4. Configure the computer IP with the same subnet as projector. (Refer to below)



LAN FW (2/4)

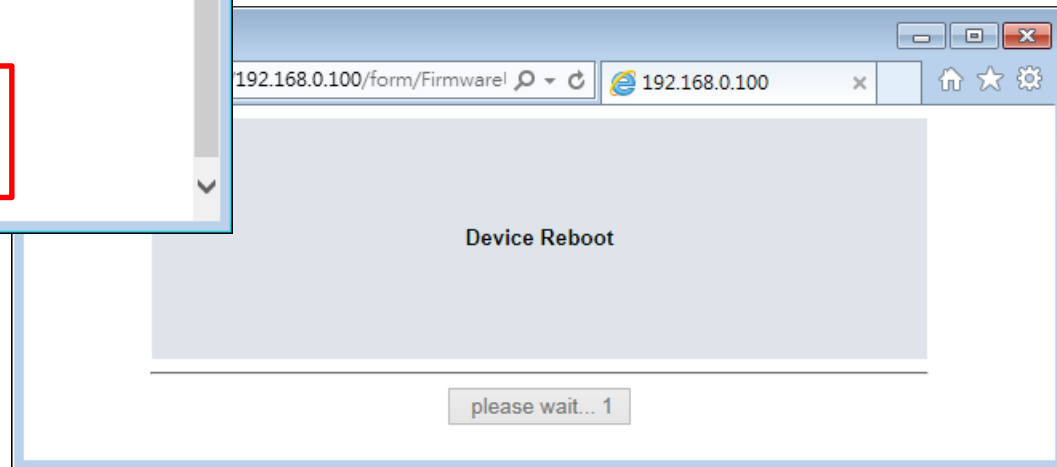
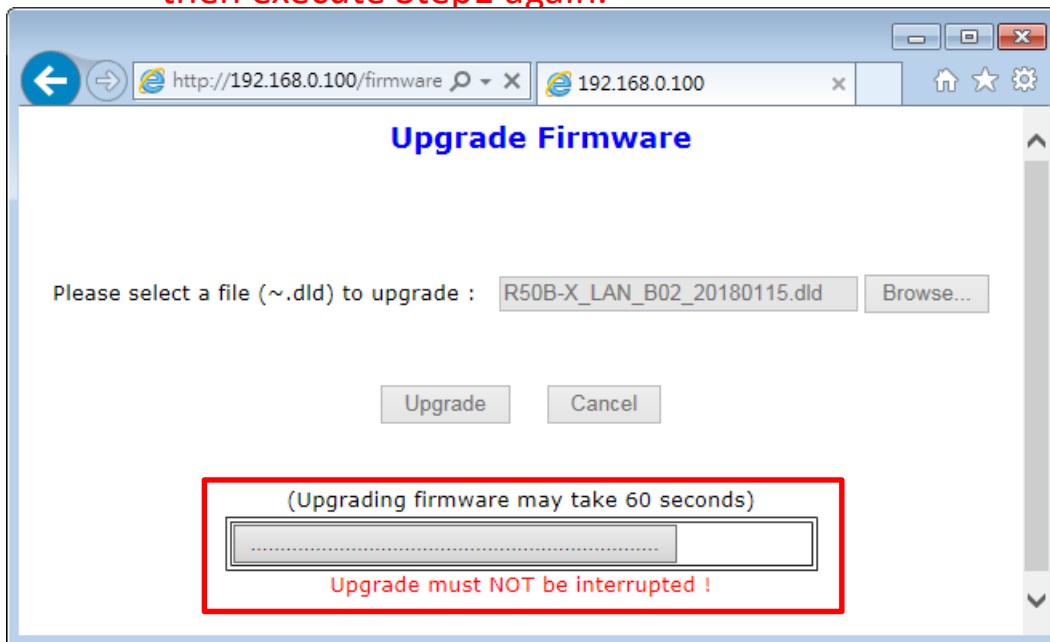
1. enter address on web browser : <http://192.168.0.100/firmwareUpdate.asp>
2. select FW file(.dld file)
3. press 「Update」 button



LAN FW (3/4)

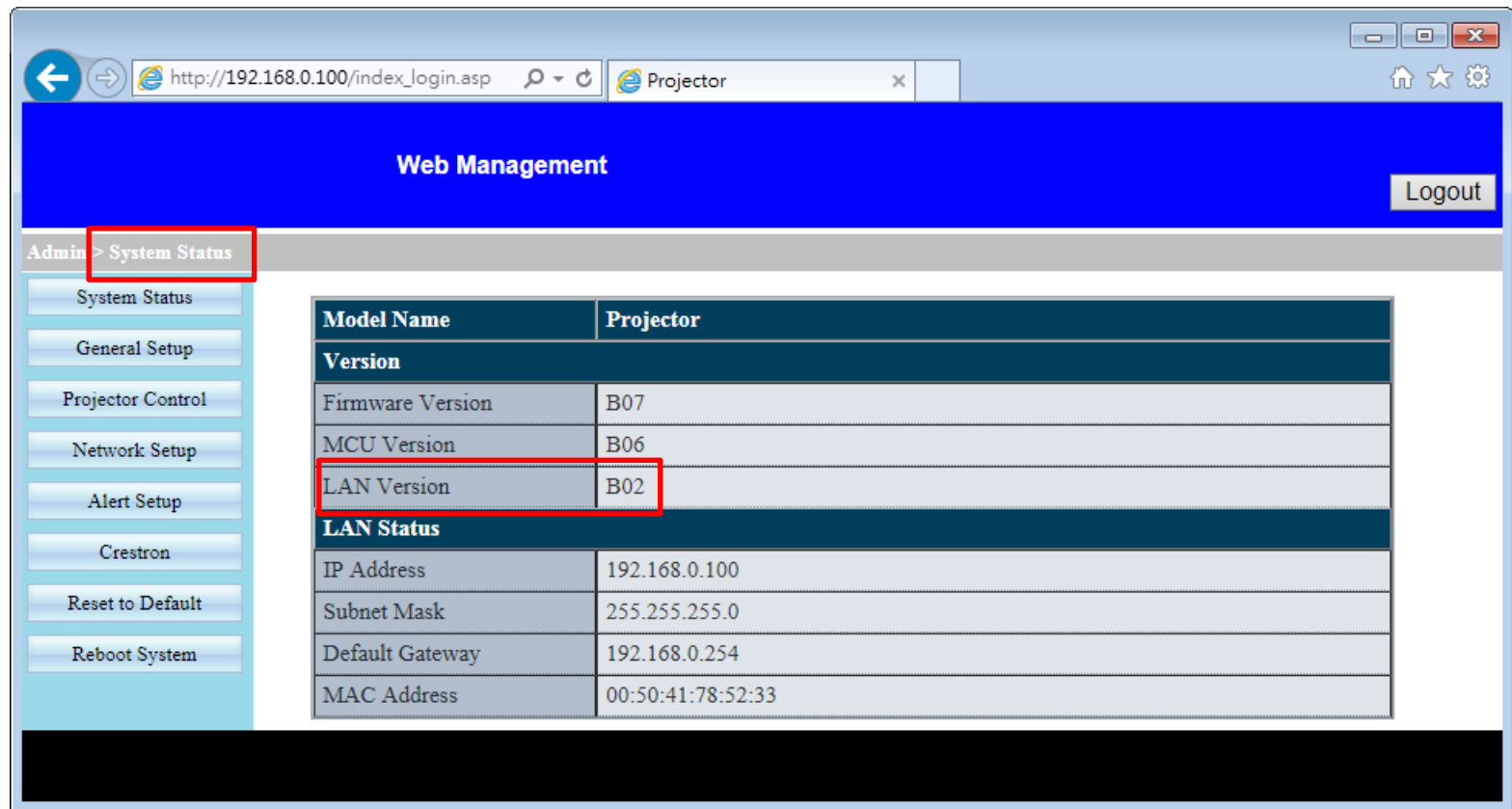
Wait for upgrading finish, it will take about 4 minutes. When upgrade finish it will display “Device Reboot” page.

If it display “cannot display the webpage” error message, please reboot projector then execute Step1 again.



LAN FW (4/4)

1. after upgrade finish, reboot projector
2. enter : `http://192.168.0.100` on web browser
3. confirm LAN FW version on System Status page

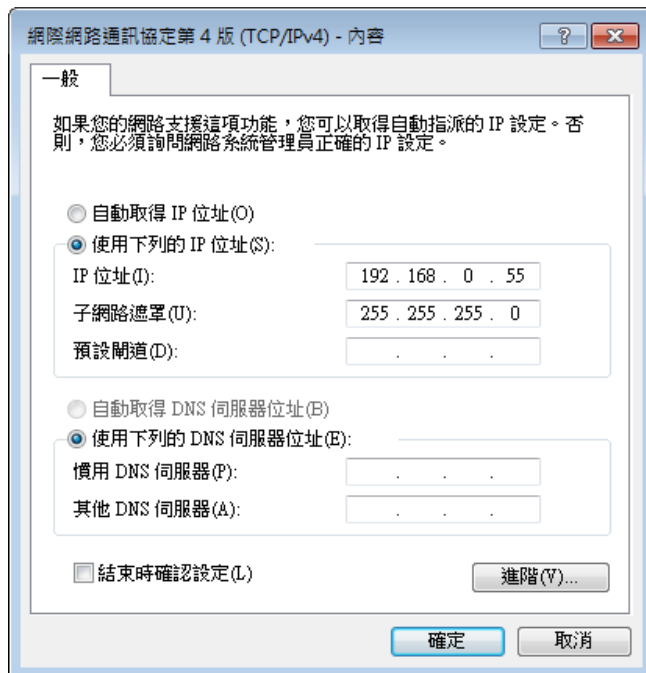


The screenshot shows a web browser window with the address `http://192.168.0.100/index_login.asp`. The page title is "Web Management" and there is a "Logout" button in the top right corner. On the left side, there is a navigation menu with the following items: "Admin > System Status" (highlighted with a red box), "System Status", "General Setup", "Projector Control", "Network Setup", "Alert Setup", "Crestron", "Reset to Default", and "Reboot System". The main content area displays a table with the following data:

Model Name	Projector
Version	
Firmware Version	B07
MCU Version	B06
LAN Version	B02
LAN Status	
IP Address	192.168.0.100
Subnet Mask	255.255.255.0
Default Gateway	192.168.0.254
MAC Address	00:50:41:78:52:33

LAN Config (1/5)

1. Turn on the projector.
2. Wire the projector RJ45 to PC (Direct wiring w/o hub)
3. Configure the projector IP to 192.168.0.100 from OSD
4. Configure the computer IP with the same subnet as projector. (Refer to below)



LAN Config (2/5)

1. Run 「ESxxx Series Tools.exe」
2. Select language
3. Factory IP : select 「192.168.0.100」
4. Press 「Submit」



The screenshot shows a Windows-style dialog box titled "FrmSelectConfig". It contains two main sections. The first section, "Select Language / 選取語言", has two radio buttons: "中文" (Chinese) and "English". The "English" radio button is selected. The second section, "Select Factory IP / 選擇出廠IP", contains a dropdown menu for "Factory IP" with "192.168.0.100" selected. Below this are two text input fields: "Mask" with "255.255.255.0" and "Gateway" with "192.168.0.254". At the bottom right is a "Submit" button. Red rectangular boxes highlight the "English" radio button, the "Factory IP" dropdown, and the "Submit" button.

FrmSelectConfig

Select Language / 選取語言

☐ 中文 ☒ English

Select Factory IP / 選擇出廠IP

Factory IP : 192.168.0.100

Mask : 255.255.255.0

Gateway : 192.168.0.254

Submit

LAN Config (3/5)

1. Press 「Scan」
2. 「Device info」 will be displayed after scanning to the device.

ESxxx Series Tools v1.4

Input MAC Address:

Factory Setting

MAC :

IP :

Mask :

Gateway :

DNS :

Scan

Factory Setting

Open web

update cfg

Device info

Model Name :

MAC :

IP :

Mask :

Gateway :

Factory Setting result:

LAN Config (4/5)

Press 「 update cfg 」

Note : don't press 「 Factory Setting 」

ESxxx Series Tools v1.4

Input MAC Address:

Factory Setting

MAC :

IP :

Mask :

Gateway :

DNS :

Device info

Model Name :

MAC :

IP :

Mask :

Gateway :

Factory Setting result:

Scan...

Scan...Success!!

Buttons: Scan, Factory Setting, Open web, **update cfg**

LAN Config (5/5)

Update completed (message show 「cfg upload....OK」)

ESxxx Series Tools v1.4

Input MAC Address:

Factory Setting

MAC :

IP :

Mask :

Gateway :

DNS :

Device info

Model Name :

MAC :

IP :

Mask :

Gateway :

Factory Setting result:

Buttons:

Scan Factory Setting

Open web update cfg

Log:

```
cfg upload....
FTP Upload proj_parameter.cfg
FTP Upload sum.md5
cfg upload....OK
```